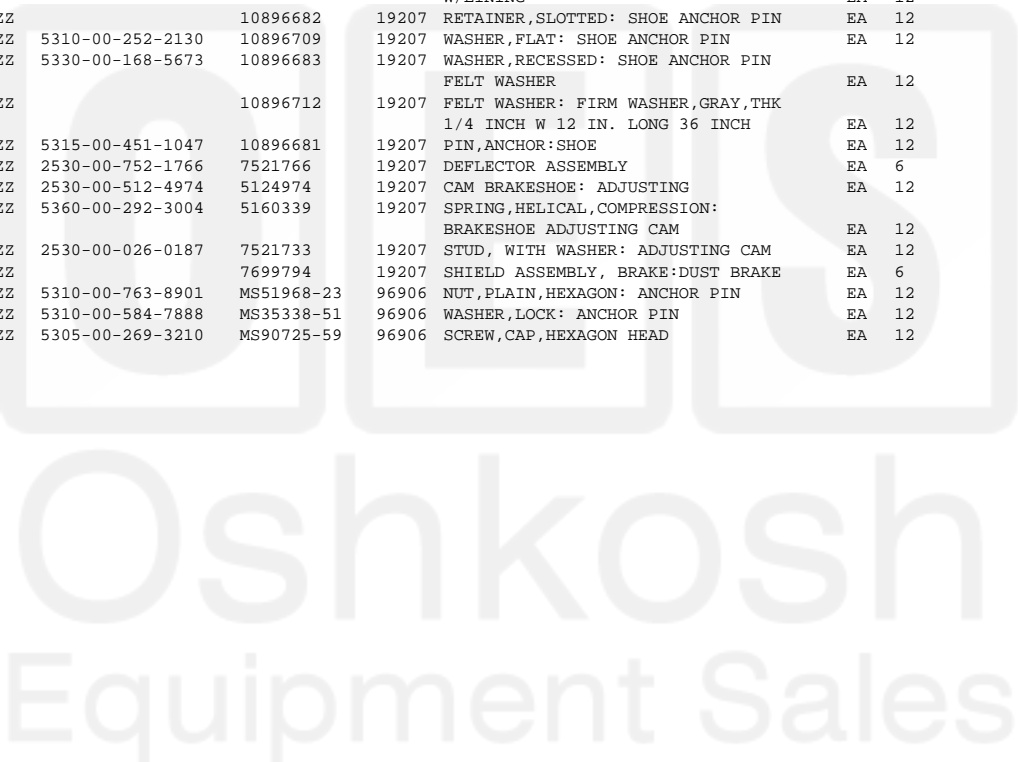
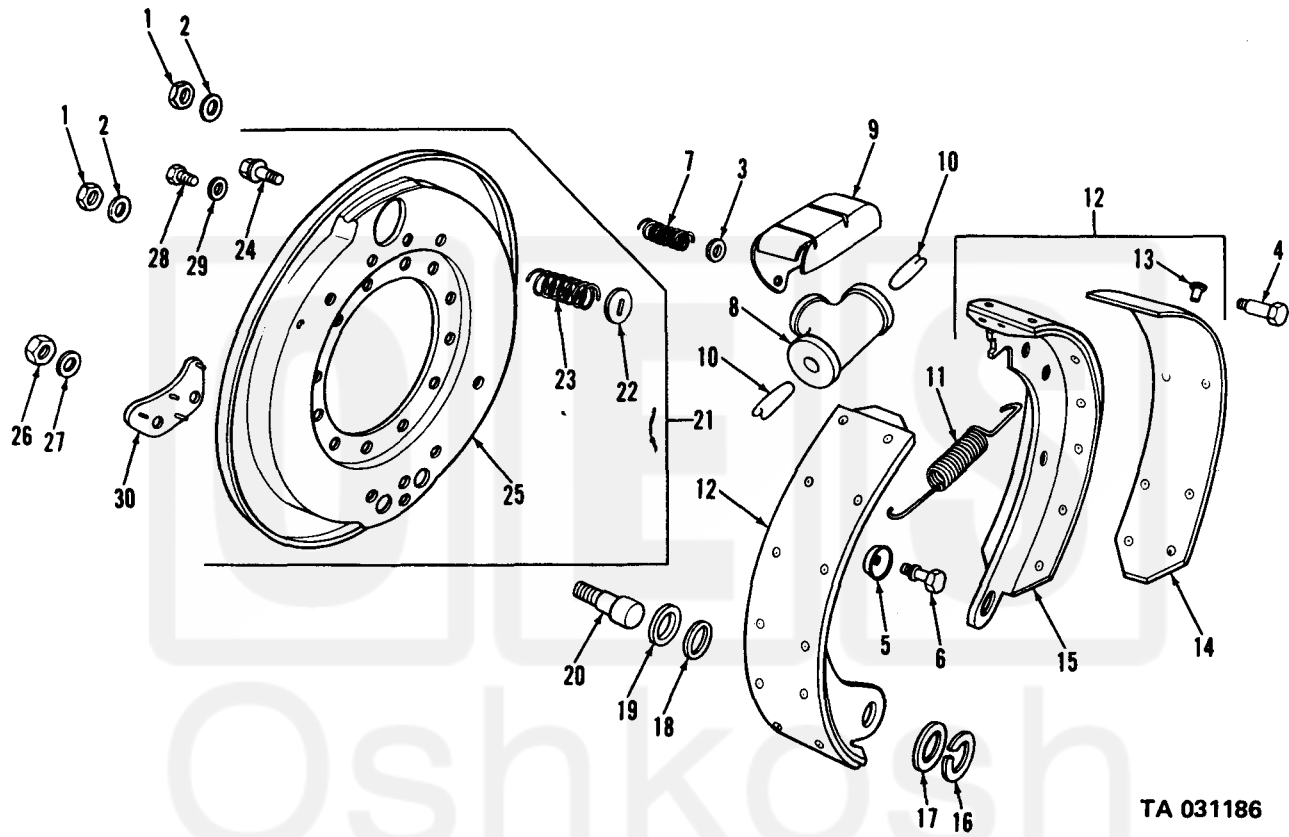


Current part is item (8,1) on diagram. Available at www.oshkoshequipment.com

(1) (a) FIG. NO.	(2) (b) ITEM NO.	(3) SMR CODE	(4) NATIONAL STOCK NUMBER	(5) (6) PART NUMBER	(6) DESCRIPTION FSCM	(7) U/M	(8) INC IN UNIT
GROUP 1202-SERVICE BRAKES							
114	1	KFOZZ		MS51968-5	96906 NUT: PIN TO BACKING PLATE (PART OF KIT, P/N 8332057)	EA	24
114	2	KFOZZ		MS35338-45	96906 WASHER, LOCK: PIN TO BACKING PLATE (PART OF KIT, P/N 8332057)	EA	24
114	3	KFOZZ		8331244	19207 WASHER: UPPER (PART OF KIT, P/N 8332057)	EA	12
114	4	KFOZZ		8331242	19207 PIN: LONG (PART OF KIT, P/N 8332057)	EA	12
114	5	KFOZZ		8331245	19207 WASHER: LOWER (PART OF KIT, P/N 8332057)	EA	12
114	6	KFOZZ		8331243	19207 PIN: SHORT (PART OF KIT, P/N 8332057)	EA	12
114	7	PAOZZ	5360-00-813-7813	10896716	19207 SPRING, HELICAL COMPRESSION: BRAKESHOE	EA	12
114	8	PAOZZ	2530-00-274-4511	7411010	19207 CYLINDER ASSEMBLY, HYDRAULIC BRAKE, WHEEL (SEE FIG 115)	EA	6
114	9	XBOZZ		7372762	19207 SHIELD	EA	4
114	10	PAOZZ	2530-00-753-9270	7539270	19207 ROD, WHEEL CYLINDER	EA	8
114	11	PAOZZ	5360-002-741-1017	10896707	19207 SPRING, HELICAL, EXTENSION: SHOE RETRACTING	EA	6
114	12	PAOFF	2530-00-752-1767	7521767	19207 SHOE BRAKE, INTERNALLY ACTUATED: W/LINING	EA	12
114	16	XBOZZ		10896682	19207 RETAINER, SLOTTED: SHOE ANCHOR PIN	EA	12
114	17	PAOZZ	5310-00-252-2130	10896709	19207 WASHER, FLAT: SHOE ANCHOR PIN	EA	12
114	18	PAOZZ	5330-00-168-5673	10896683	19207 WASHER, RECESSED: SHOE ANCHOR PIN FELT WASHER	EA	12
114	19	XBOZZ		10896712	19207 FELT WASHER: FIRM WASHER, GRAY, THK 1/4 INCH W 12 IN. LONG 36 INCH	EA	12
114	20	PAOZZ	5315-00-451-1047	10896681	19207 PIN, ANCHOR: SHOE	EA	12
114	21	PAOZZ	2530-00-752-1766	7521766	19207 DEFLECTOR ASSEMBLY	EA	6
114	22	PAOZZ	2530-00-512-4974	5124974	19207 CAM BRAKESHOE: ADJUSTING	EA	12
114	23	PAOZZ	5360-00-292-3004	5160339	19207 SPRING, HELICAL, COMPRESSION: BRAKESHOE ADJUSTING CAM	EA	12
114	24	PAOZZ	2530-00-026-0187	7521733	19207 STUD, WITH WASHER: ADJUSTING CAM	EA	12
114	25	XBOZZ		7699794	19207 SHIELD ASSEMBLY, BRAKE: DUST BRAKE	EA	6
114	26	PAOZZ	5310-00-763-8901	MS51968-23	96906 NUT, PLAIN, HEXAGON: ANCHOR PIN	EA	12
114	27	PAOZZ	5310-00-584-7888	MS35338-51	96906 WASHER, LOCK: ANCHOR PIN	EA	12
114	28	PAOZZ	5305-00-269-3210	MS90725-59	96906 SCREW, CAP, HEXAGON HEAD	EA	12



Current part is item (8,1) on diagram. Available at www.oshkoshequipment.com



TA 031186

Figure 114. Service brake assembly.

Current part is item (8,1) on diagram. Available at www.oshkoshequipment.com

(1) (a) FIG. NO.	(2) (b) ITEM NO.	(3) SMR CODE	(4) NATIONAL STOCK NUMBER	(5) (6) PART NUMBER	(7) (8) DESCRIPTION FSCM USABLE ON CODE	(9) (10) U/M INC IN UNIT
1204-HYDRAULIC BRAKE SYSTEM						
115	1	PAOZZ	2530-00-274-4511	7411010	19207 CYLINDER ASSEMBLY: HYDRAULIC BRAKES, WHEEL (SEE FIG 114,ITEM 8)	EA 6
115	2	PAOZZ	4730-00-516-7419	5167419	19207 BOLT,FLUID PASSAGE	EA 6
115	3	PAOZZ	5310-00-209-1761	5160323	19207 WASHER,FLAT:INLET FITTING BOLT	EA 6
115	4	PAOZZ	4730-00-278-5812	5298521	19207 CONNECTOR,MULTIPLE,FLUID PRESSURE LINE:INLET	EA 6
115	5	PAOZZ	5310-00-275-6635	5214539	19207 WASHER,FLAT: INLET FITTING	EA 6
115	6	PAOZZ	2530-00-737-3260	7373260	19207 BLEEDER VALVE, HYDRAULIC	EA 1
116	1	PAOZZ	5306-00-317-3096	596453	21450 BOLT,ASSEMBLED WASHER	EA 4
116	2	PAOZZ	5340-00-337-8222	7372733	19207 CONNECTOR,MASTER CYLINDER	EA 1
116	3	PAOZZ	5310-00-839-2066	MS35691-45	96906 NUT,JAM	EA 1
116	4	PAOFF	2530-00-753-9267	7539267	19207 CYLINDER ASSEMBLY,HYDRAULIC BRAKE MASTER	EA 1
116	5	PAOFF	4730-00-287-1835	MS49005-2	96906 PIPE,PLUG	EA 1
116	6	PAOFF	2530-00-703-2636	7032636	19207 CAP	EA 1
116	7	PAOFF	5365-00-737-3354	7373354	19207 SPACER	EA 1
117	2	PAOZZ	5305-00-269-2801	MS90726-58	96906 SCREW,CAP,HEXAGON HEA	EA 8
117	3	PAOZZ	5340-00-954-6014	MS21333-121	96906 CLAMP,LOOP	EA 10
117	4	PAOZZ	5340-00-523-5996	7373268	19207 CLAMP,LOOP: BRAKE LINE	EA 5
117	5	PAOZZ	4710-00-752-9371	7529371	19207 TUBE ASSEMBLY, METAL: FORWARD REAR AXLE TEE TO RIGHT WHEEL CYLINDER	EA 1
117	6	PAOZZ	2520-00-752-9373	7529373	19207 LINE,AXLE TEE: REAR AXLE TEE TO RIGHT WHEEL CYLINDER	EA 1
117	7	PAOZZ	4710-00-752-9370	7529370	19207 TUBE ASSEMBLY,METAL: FORWARD REAR AXLE LINE TEE TO LEFT WHEEL CYLINDER	EA 1
117	8	PAOZZ	4710-00-752-9372	7529372	19207 TUBE ASSEMBLY,METAL:REAR,REAR AXLE LINE TO TEE TO LEFT WHEEL CYLINDER	EA 1
117	9	XBOZZ		125931	21450 CLAMP,LOOP:REAR AXLE BRAKE HOSE TO TORQUE ROD AA,AB	EA 4
117	9	PAOZZ	5340-00-904-3705	MS21333-82	96906 STRAP,ADJUSTABLE,TIEDOWN AC	EA 4
117	10	PAOZZ	5310-00-934-9751	MS35650-302	96906 NUT: CLAMP MTG AA,AB	EA 8
117	11	PAOZZ	5310-00-809-8546	MS27183-8	96906 WASHER,FLAT:CLAMP MTG AA,AB	EA 8
117	12	XBOZZ		424339	21450 SCREW,ASSEMBLED WASHER: BRAKE HOSE CLAMP AA,AB	EA 4
117	13	PAOZZ	4720-00-737-3248	7373248	19207 HOSE ASSEMBLY,NONMETAL: SUPPLY, FORWARD,REAR AND REAR AXLE BRAKE	EA 2
117	14	PAOZZ	4730-00-737-3249	7373249	19207 TEE,MULTIPLE,FLUID PRESSURE LINE: REAR,REAR AND FORWARD REAR AXLE BRAKE WHEEL CYLINDER LINE	EA 2



Current part is item (8,1) on diagram. Available at www.oshkoshequipment.com

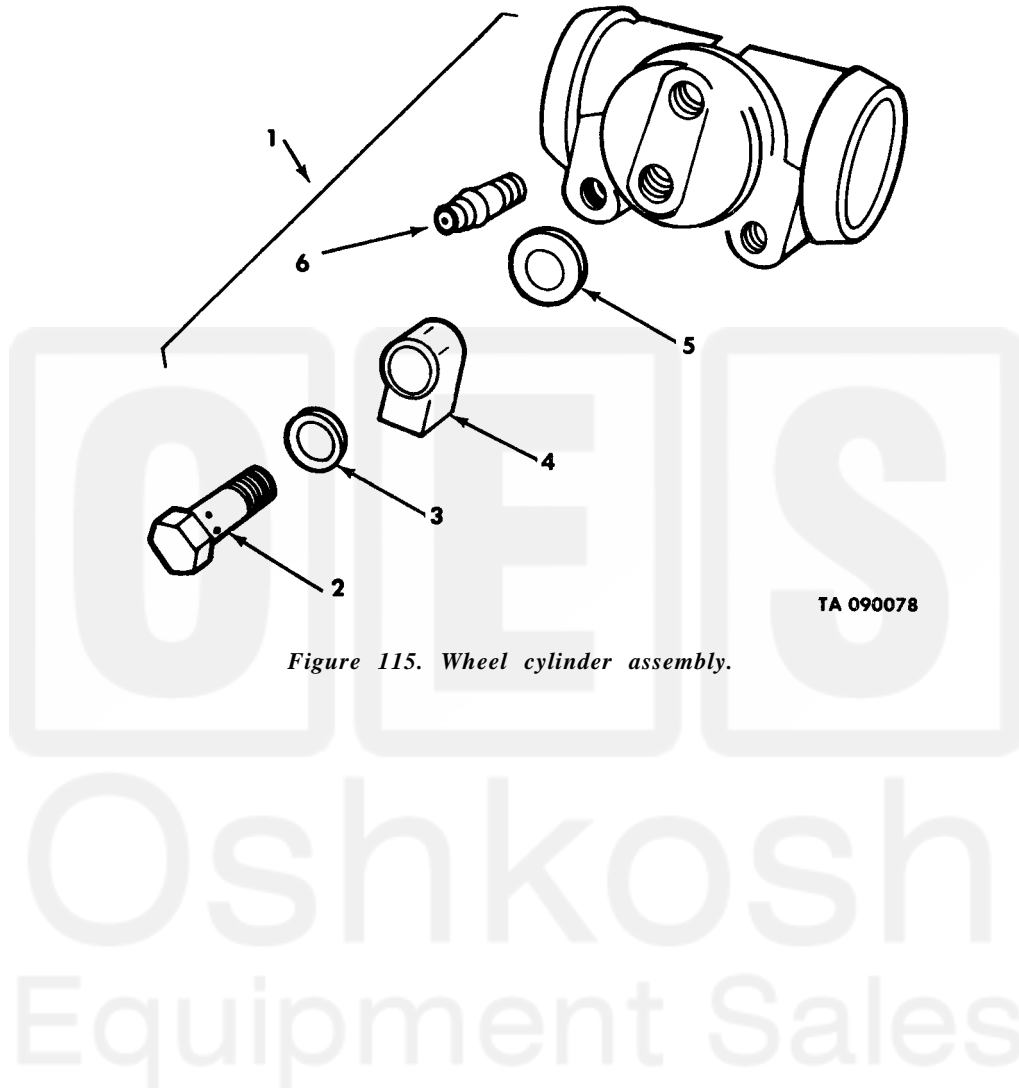


Figure 115. Wheel cylinder assembly.

OES
Oshkosh
Equipment Sales